

# Integrative Biology

[ib.berkeley.edu/undergrad](http://ib.berkeley.edu/undergrad)

Major Information Session  
Golden Bear Orientation, 2017

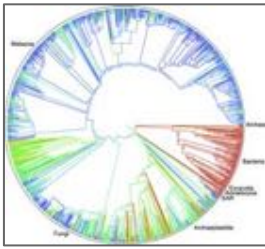
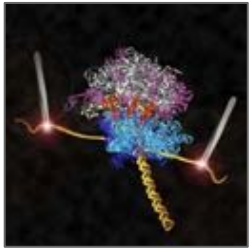
# IB Academic Advising

## 3060 Valley Life Science Bldg

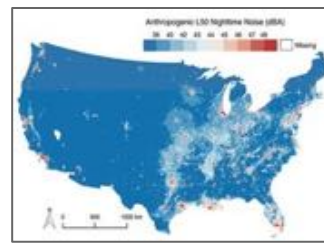
- Hours: Monday-Thursday: 9-12, 1-4  
Friday: 9-12, 1-3
- Email: [ibusso@berkeley.edu](mailto:ibusso@berkeley.edu)
- Website: <http://ib.berkeley.edu/undergrad>
- Zachary Chestnut, Elinor Gregorio, Elvia Sornoza

# Biology at Berkeley

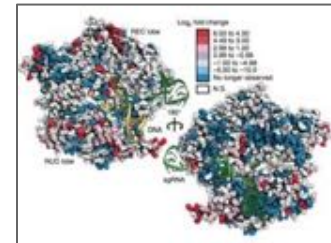
College of Letters & Sciences



Public Health



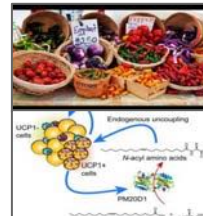
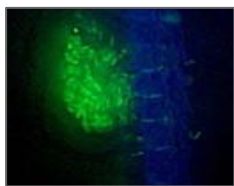
College of Chemistry



College of Engineering

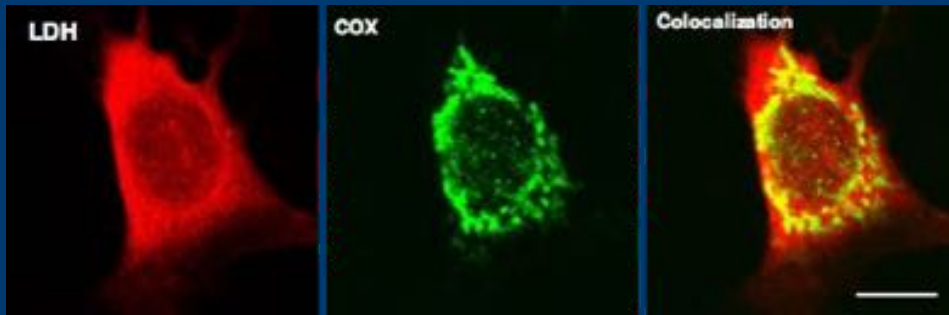


College of Natural Resources

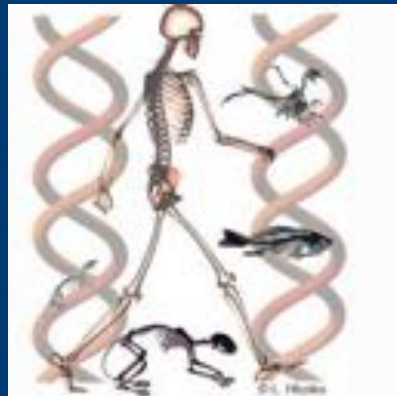


# What is Integrative Biology?

- Comparative, interdisciplinary approaches
- Model and non-model systems
- Our broad range of expertise includes:
  - 🔍 Behaviorists
  - 🔍 Ecologists
  - 🔍 Evolutionary biologists
  - 🔍 Geneticists
  - 🔍 Paleontologists
  - 🔍 Physiologists
  - 🔍 Systematists



 INTEGRATIVE  
BIOLOGY  
Berkeley  
UNIVERSITY OF CALIFORNIA



# Lower Division Requirements

Course Number	Course Title
Math 10A or 1A	Methods of Mathematics: Calculus, Statistics, and Combinatorics
Math 10B or 1B	Methods of Mathematics: Calculus, Statistics, and Combinatorics
Chem 1A/L	General Chemistry and Lab
Chem 3A/L	Organic Chemistry and Lab
Chem 3B/L	Organic Chemistry and Lab
Biology 1B	General Biology (includes lab)
Biology 1A/L	General Biology and Lab
Physics 8A	Calculus-based Physics (includes lab)
Physics 8B	Calculus-based Physics (includes lab)
Integrative Biology 77A or 77B	Integrative Human Biology

# Declaration Requirements

Course Number	Course Title
Math 10A or 1A	Methods of Mathematics: Calculus, Statistics, and Combinatorics
Math 10B or 1B	Methods of Mathematics: Calculus, Statistics, and Combinatorics
Chem 1A/L	General Chemistry and Lab
Chem 3A/L	Organic Chemistry and Lab
Chem 3B/L	Organic Chemistry and Lab
Biology 1B	General Biology (includes lab)
Biology 1A/L	General Biology and Lab
Physics 8A	Calculus-based Physics (includes lab)
Physics 8B	Calculus-based Physics (includes lab)
Integrative Biology 77A or 77B	Integrative Human Biology

 Required to declare

 2 of 3 required at declaration

# Declaring Integrative Biology

- Completion of the following courses:
  - Math 1A/1B and Math 10A/10B
  - Chem 1A/1AL - General Chemistry
  - Chem 3A - Organic Chemistry
  - Biology 1A/1AL or Biology 1B
- Enrolled in or have completed Chem 3B OR the 2nd biology course, and have scored an average or better on the midterm exam
- Enrolled in or have completed IB 77A or IB 77B
- GPAs for courses in the major, lower division, and upper division must each be at least 2.0



# Sample Schedules

Math 10A or 1A  
& Chem 1A/1AL

Yr. 1	Fall	Units	Spring	Units
	Chem 1A/1AL	3+1	Chem 3A/3AL	3+2
	Math 10A	4	Math 10B	4
	IB 77A (IB only)	1		
Yr. 2	Fall	Units	Spring *declare IB/MCB	Units
	Chem 3B/3BL	3+2	Bio 1A/1AL	3+2
	Bio 1B	4	Physics 8A	4
Yr. 3	Fall	Units	Spring	Units
	Physics 8B	4	Upper Div. IB/MCB	3-4
	Upper Div. IB/MCB	3-4	Upper Div. IB/MCB	3-4















Math 32

Yr. 1	Fall	Units	Spring	Units
	Chem 1A/1AL	3+2	Chem 3A/3AL	3+2
	Math 32		Math 1A	4
	IB 77A (IB only)	1		
Yr. 2	Fall	Units	Spring *declare MCB	Units
	Chem 3B/3BL	3+2	Bio 1A/1AL	3+2
	Math 1B	4	Physics 8A	4
Yr. 3	Fall *declare IB	Units	Spring	Units
	Physics 8B	4	Upper Div. IB/MCB	3-4
	Bio 1B	4	Upper Div. IB/MCB	3-4

Chem P

Yr. 1	Fall	Units	Spring	Units
	Chem P	0	Chem 1A/1AL	3+2
	Math 10A	4	Math 10B	4
	IB 77A (IB only)	1		
Yr. 2	Fall	Units	Spring	Units
	Chem 3A/3AL	3+2	Chem 3B/3BL	3+2
	Math 1B	4	Physics 8A	4
Yr. 3	Fall *declare IB/MCB	Units	Spring	Units
	Bio 1A/1AL	3+2	Upper Div. IB/MCB	3-4
	Physics 8B	4	Upper Div. IB/MCB	3-4

# Upper Division Requirements - 24 units

	Track 1			Track 2	
Genetics, Evolution			<b>A</b>		
Ecology, Behavior, Biodiversity			<b>B</b>		
Structure, Function, Human Health			<b>C</b>		
			<b>Lab<sup>++</sup></b>		
			<b>Elec.*</b>		

<sup>++</sup>Some lab courses also count for a group course

\*Electives only necessary to reach 24 units

# Research and Honors

- 🔍 Projects across campus and beyond
- 🔍 Course credit

## Honors

- 3.3 GPA requirement
- Independent research project
- Written thesis and poster presentation

# Study Abroad

- IB 158LF Moorea
- UC EAP Pre-approved courses
- Study Abroad in Norway
- Physics in the UK

# Peer Advising

- Course planning
- Major exploration
- Extracurricular activities
- Much more...



<http://ib.berkeley.edu/undergrad/ibpeers>



<https://www.facebook.com/ibpeeradvisors/>



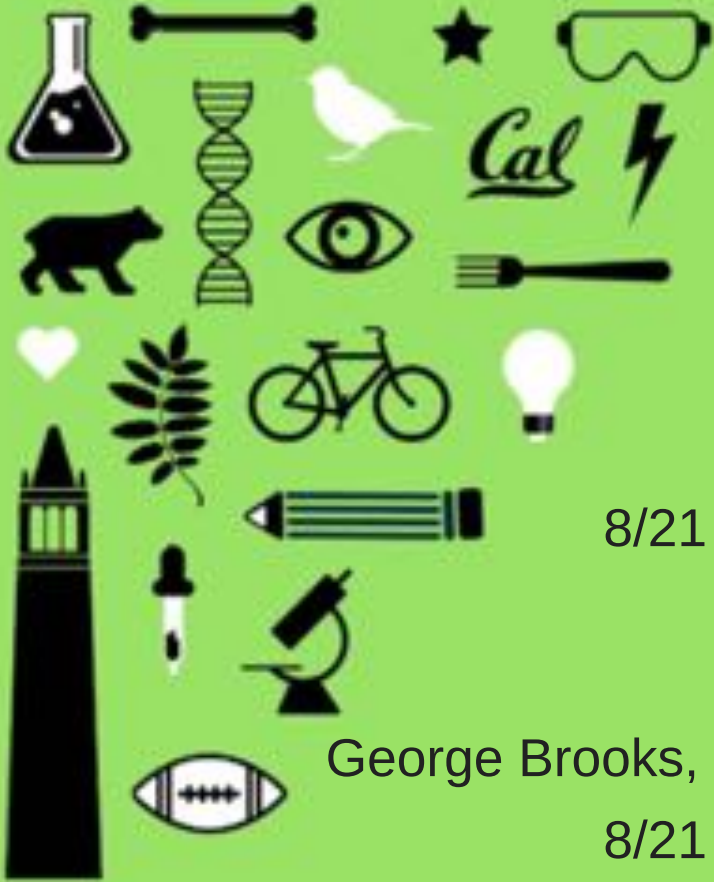
[ibpeeradvising@gmail.com](mailto:ibpeeradvising@gmail.com)

# Careers after IB

- Pre-health
- Graduate school
- Education
- Consulting
- Anthropologist/Paleontology
- Research
- Pre-vet
- Pre-law
- Whatever you want!

# Campus Resources

- Student Learning Center (SLC)
- Tang Center
- Recreational Sports Facility (RSF)
- Career Center
- Disabled Students Program (DSP)
- Centers for Educational Equity and Excellence (CE3)
- Berkeley International Office (BIO)
- Berkeley Study Abroad Office
- Food Pantry



## **IB Info Session for Freshmen**

8/16 | 4-5pm | 100 Lewis

8/18 | 10-11am | 2050 VLSB

## **Life as an IB/MCB Transfer Student**

8/21 | 2-3pm | 390 Hearst Memorial Mining Building

## **IB Faculty Panel**

George Brooks, Eileen Lacey, Kevin Padian, Jonathon Stillman

8/21 | 3-4pm | 390 Hearst Memorial Mining Building

## **Biology Advising for Success**

8/24, 8/28 | 4-5pm | 2060 VLSB

# ***Golden Bear Orientation***

## **Biology Majors Panel**

9/7 | 2-3pm | 2063 VLSB

# **INTEGRATIVE BIOLOGY**



# IB Academic Advising

## 3060 Valley Life Science Bldg

- Hours: Monday-Thursday: 9-12, 1-4  
Friday: 9-12, 1-3
- Email: [ibusso@berkeley.edu](mailto:ibusso@berkeley.edu)
- Web: <http://ib.berkeley.edu/undergrad>
- Zachary Chestnut and Elinor Gregorio