



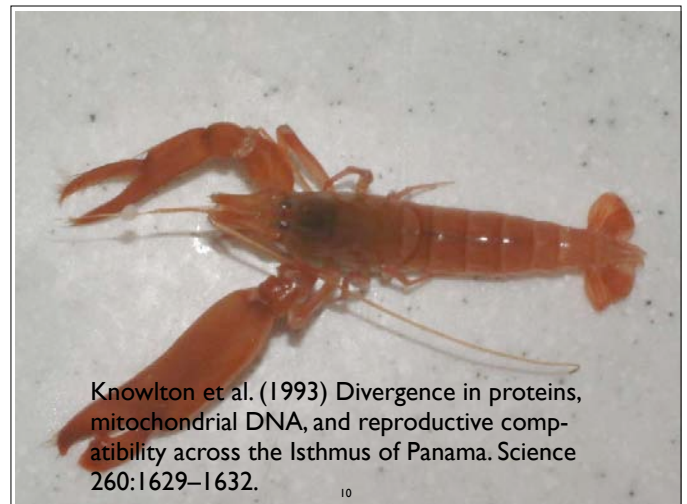
7



8



9



Knowlton et al. (1993) Divergence in proteins, mitochondrial DNA, and reproductive compatibility across the Isthmus of Panama. *Science* 260:1629–1632.

10

Reproductive isolation after divergence (Dodd, 1989)

Grew four populations of fruit flies on starch-based food.

Grew four populations on maltose-based medium.

After letting the populations reproduce independently for some time, he found detectable genetic differences using starch-gel electrophoresis.

11

Dodd (1989)

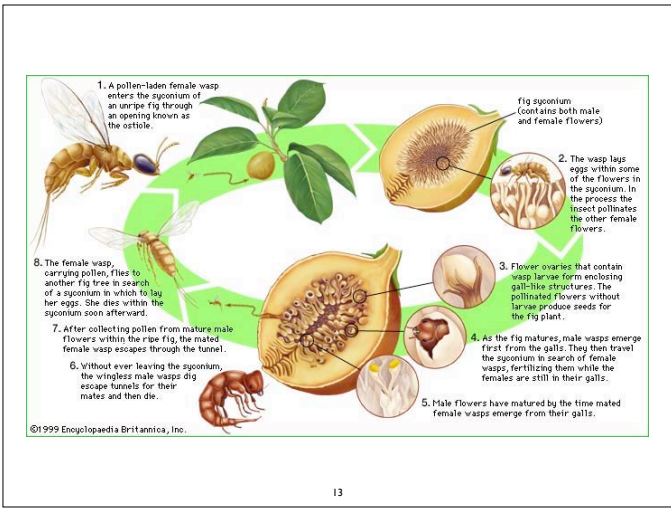
Female

	Starch	Maltose
Male	22	9
	8	20

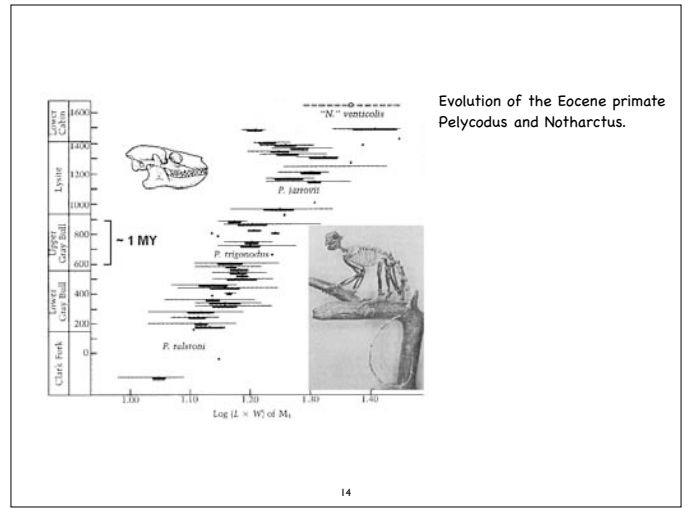
Female

Control	Starch (same)	Starch (diff.)
Male	18	15
	12	15

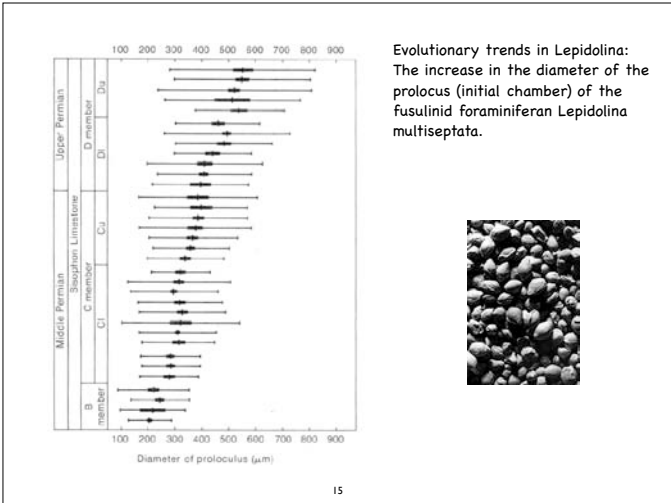
12



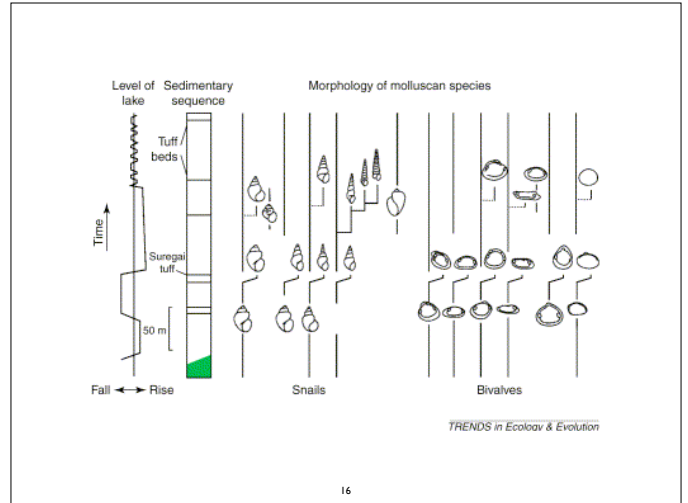
13



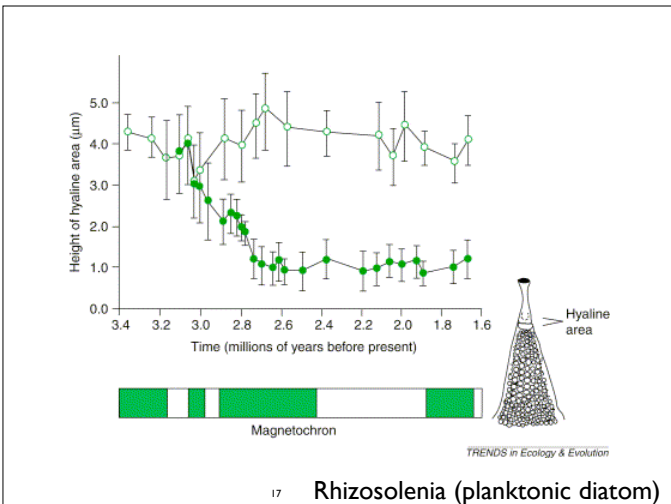
14



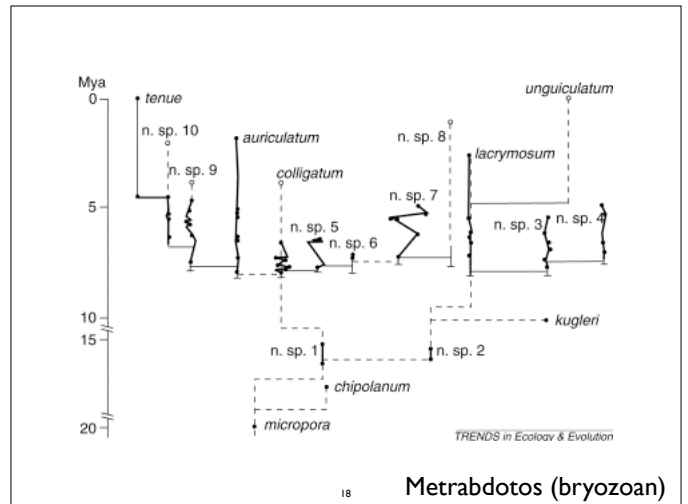
15



16



17



18